

PELICAN VILLAGE

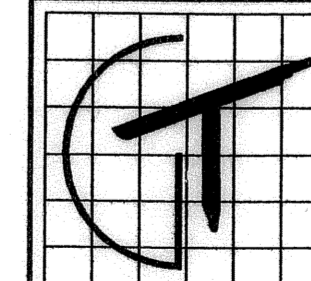
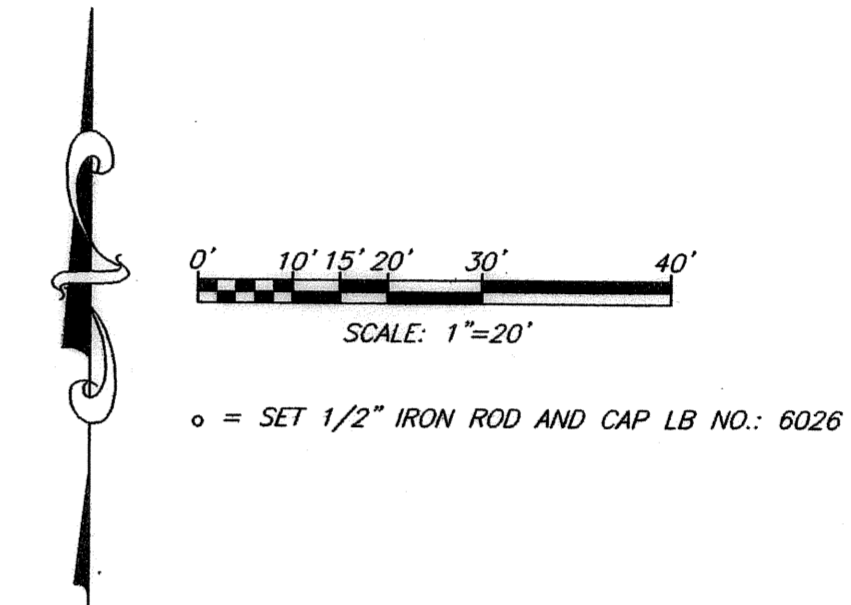
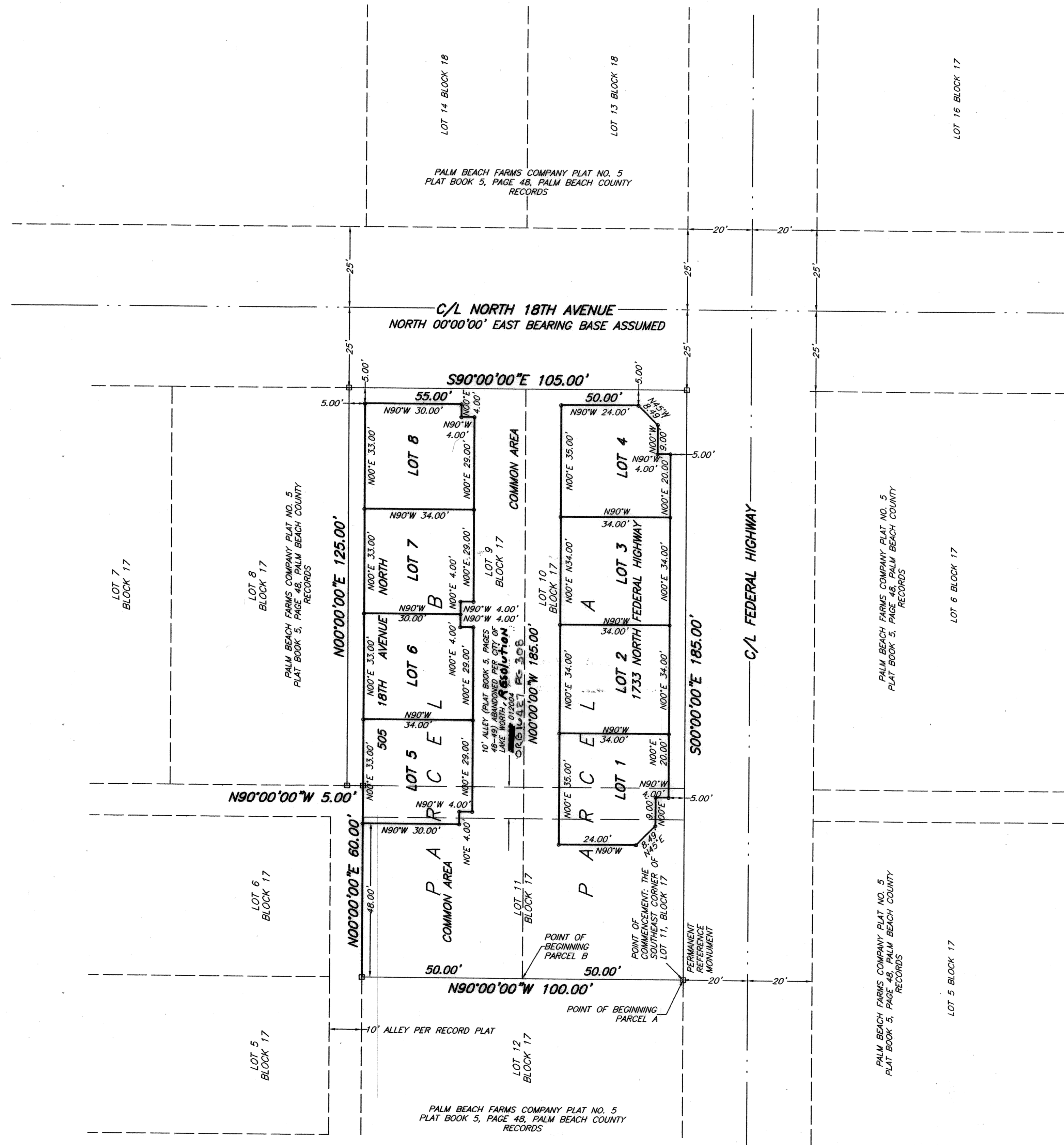
A REPLAT OF LOTS 9, 10 AND 11, AND A PORTION OF THE 10 FOOT ALLEY NORTH OF LOT 11, BLOCK 17, PALM BEACH FARMS COMPANY PLAT NO.5, PLAT BOOK 5, PAGES 48 THROUGH 49, IN SECTION 15, TOWNSHIP 44 SOUTH, RANGE 43 EAST, PALM BEACH COUNTY, FLORIDA

STATE OF FLORIDA
COUNTY OF PALM BEACH

This plat was filed for record at _____, this day of _____, 2004, and duly recorded in Plat Book No. _____ on Pages _____ through _____

DOROTHY H. WILKEN
Clerk Circuit Court

By: _____



GT SURVEYING SERVICES, INC.
 2636 WESTGATE AVENUE,
 WEST PALM BEACH FLORIDA 33409
 OFFICE: 561-688-0553 FAX: 561-688-9579
 E-MAIL: gsurvey@bellsouth.net

A REPLAT OF LOTS 9, 10 AND 11 AND A PORTION OF THE 10 FOOT ALLEY NORTH OF LOT 11, BLOCK 17, PALM BEACH FARMS COMPANY PLAT NO. 5, PLAT BOOK 5, PAGES 48 THROUGH 49, PALM BEACH COUNTY, FLORIDA
 DATE: 02-20-04 SCALE: 1"=20' SHEET 2 OF 2